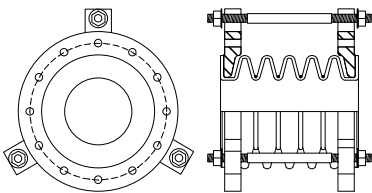
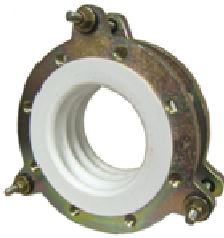


# Global-Flex Mfg.

1580 Charles Drive Redding, CA 96003

## Style 715-DOM Teflon Expansion Joint



**Global-Flex Mfg.** *Convolute Teflon bellows expansion joints and flexible couplers* offer the best combination of low spring-rate flexibility and the chemical inert properties of PTFE material. Style 715 convolute expansion joint is designed to meet the needs of the high-technology, chemical-petrochemical, power generation, pulp and paper, and other demanding industry needs. Teflon bellows connectors are versatile and will 1) *absorb pipe movements and stress*; 2) *isolate mechanical vibration*; 3) *reduce system noise*; 4) *protect against surge forces*.

The construction of the connector utilizes molded convolutions of white PTFE. These convolutions are reinforced with metallic rings between the bellows for pressure rating and stability. The metal backing flanges are protected by the lip of the Teflon bellows, so that all wetted surfaces are Teflon. Steel limit rods are factory installed. Additional convolutions provide greater movement capability. Options include Type 316 stainless steel backing flanges and hardware, white epoxy coated flanges, and high-purity cleaning and packaging. 700 series expansion joints can also be manufactured in a machined, accordion style.

### Features:

- Chlorine Resistance
- Anti-stick properties
- Noise and Vibration dampening
- High Flexibility
- Thermal Stability
- Resistance to age cracking
- High pressure ratings
- Temperature rating up to 400 F

I.D.	Face/Face Inch	Flange O.D.	Bolt Cir Dia.	No of Bolt Holes	Bolt Hose Dia.	Movements		Misalignment Max	Weight
						Compression	Extension		
2	3.35	6	4.75	4	.75	2.75	3.75	28	5.72
2-1/2	4.09	7	5.5	4	.75	2.75	3.75	22	10.30
3	4.33	7.5	6.0	4	.75	2.75	3.75	20	12.19
4	4.92	9	7.5	8	.75	3.25	4.75	20	20.72
5	5.59	10	8.5	8	.875	3.25	4.75	12	28.25
6	6.30	11	9.5	8	.875	3.25	4.75	14	32.52
8	6.30	13.5	11.75	8	.875	3.25	4.75	14	42.72
10	6.57	16	14.25	12	1	4.0	6.0	12	64.20
12	8.23	19	17	12	1	4.0	6.0	10	98.09

For high-purity water and other high-purity applications, specify Class 100 cleaning and packaging. Type 316 stainless steel or white epoxy coated hardware should be considered in these applications.