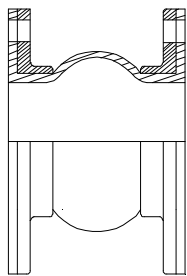


Global-Flex Mfg.

1580 Charles Drive Redding, CA 96003

Style REJM Rubber Expansion Joint



Global-Flex Mfg. Style REJM expansion joints are the ultimate in quality molded construction. Premium grade elastomers provide long service life in the most demanding applications. For superior performance and pressure ratings, Global-Flex **Style REJM** expansion joints have a minimum *4 to 1* safety factor built in to their rated operating pressures. Working pressure up to 200 psi.

Global-Flex Mfg. Style REJM comes standard with a chlorobutyl tube and cover. These elastomers provide excellent resistance against heat and a wide variety of fluids.

Features:

- Allow for greater motions capabilities than standard arch expansion joints
- Excellent for absorbing thermal expansion, and eliminating vibration and sound
- Gasket and packing not required
- Absorbs water pulsations and protects start-up surge force
- Vacuum ratings to 25 Hg

I.D.	Face/Face Inch	Flange O.D.	Bolt Cir Dia.	No of Bolt Holes	Bolt Hole Dia.	Working Pressure	Axial Comp	Axial Ext	Trav Defl	Weight
2	6	6	4.75	4	.75	200	1.75	.75	.75	4
2-1/2	6	7	5.5	4	.75	200	1.75	.75	.75	4.5
3	6	7.5	6.0	4	.75	200	1.75	.75	.75	5.5
4	6	9	7.5	8	.75	200	1.75	.75	.75	8
5	6	10	8.5	8	.875	200	1.75	.75	.75	9
6	6	11	9.5	8	.875	200	1.75	.75	1	11
8	6	13.5	11.75	8	.875	180	1.75	.75	1	15
10	8	16	14.25	12	1	180	1.75	.75	1	23
12	8	19	17	12	1	180	1.75	.75	1	34