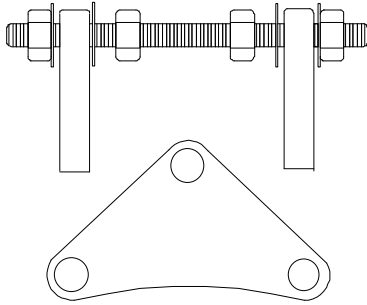


# Global Flex Mfg.

1580 Charles Drive Redding, CA 96003

## STYLE # CR

## Control Rods Expansion Joint Neoprene



Part-Number	Size Inches
CR-150-CS	1-1/2" X 6"
CR-200-CS	2" X 6"
CR-250-CS	2-1/2" X 6"
CR-300-CS	3" X 6"
CR-400-CS	4" X 6"
CR-500-CS	5" X 6"
CR-600-CS	6" X 6"
CR-800-CS	8" X 6"
CR-1000-CS	10" X 8"
CR-1200-CS	12" X 8"
CR-1400-CS	14" X 8"
CR-1600-CS	16" X 8"
CR-1800-CS	18" X 8"
CR-2000-CS	20" X 8"
CR-2400-CS	24" X 8"

CONTROL UNIT				NOMINAL PIPE SIZE EXP JT ID INCH	MAXIMUM SURGE OR TEST PRESSURE OF THE SYSTEM				
PLATE THICKNESS INCHES	ROD DIAMETER INCHES	STANDARD CONTROL UNITS ASSEMBLY OF:			NUMBER OF CONTROL RODS RECOMMENDED				
		RODS	PLATES		2	3	4	6	8
.375	.500	2	4	.50	1328	--	--	--	--
.375	.500	2	4	.75	1106	--	--	--	--
.375	.500	2	4	1.0	949	--	--	--	--
.375	.500	2	4	1.25	830	--	--	--	--
.375	.500	2	4	1.50	510	--	--	--	--
.375	.625	2	4	2	661	--	--	--	--
.375	.625	2	4	2.5	529	--	--	--	--
.375	.625	2	4	3	441	--	--	--	--
.375	.625	2	4	3.5	365	547	729	--	--
.375	.625	2	4	4	311	467	622	--	--
.375	.625	2	4	5	235	353	470	--	--
.500	.625	2	4	6	186	278	371	--	--
.500	.750	2	4	8	163	244	329	--	--
.750	.875	2	4	10	163	144	325	488	--
.750	1.00	2	4	12	160	240	320	481	--
.750	1.00	2	4	14	112	167	223	335	--
.750	1.125	2	4	16	113	170	227	340	453
.750	1.125	2	4	18	94	141	187	281	375
.750	1.125	2	4	20	79	118	158	236	315
1.00	1.250	2	4	22	85	128	171	256	342
1.00	1.250	2	4	24	74	110	147	221	294

\* REF FLUID SEALING TECHNICAL HAND BOOK