

Global-Flex Mfg.

1580 Charles Drive Redding, CA 96003

Style PB & PB-R Multi Ply Bellows Pump Connectors

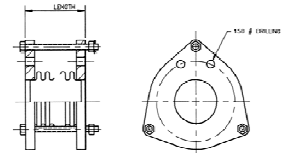


Global-Flex Mfg. Series BP & PB-R Bellows Pump Connectors are designed to absorb noise and vibration generated by mechanical equipment. In addition, these compact length connectors will take-up axial and lateral motion. Series **PB** connectors utilize a highly flexible multi-ply Type 304 stainless steel bellows construction for greater movement absorbing abilities a pump connectors, and can offer substantial temperature and pressure and longer life. The longer Style **PB-R** is manufactured in the same lengths

as standard rubber pump connectors, and can offer substantial temperature and pressure advantages Special 150# ANSI flanges and limit rods are carbon steel. Sizes range from 2" to 14" diameter

Features:

- T-304 2-Ply Construction
- AISI-1020 Tie Rods
- Noise and Vibration dampening
- ANSI 150 Carbon Steel Flanges
- Compression Sleeves (304) SS
- High pressure ratings 225 PSIG
- Temperature Rating up to 750 F
- Rated for Full Vacuum



Global-Flex Part No.	Size Inch	Length Inch	Flange O.D.	Bolt Cir Dia.	No of Bolt Holes	Bolt Hose Dia.	Bellows		Working Pressure	Axial Comp	Axial Ext	Lateral	Weight
							No. Ply	Material					
PB-200	2	4-3/8	6	4.75	4	.75	2	T304	225	.50	.125	.125	14
PB-250	2-1/2	4-3/8	7	5.5	4	.75	2	T304	225	.50	.125	.125	16
PB-300	3	4-3/8	7.5	6.0	4	.75	2	T304	225	.50	.125	.125	20
PB-400	4	4-5/8	9	7.5	8	.75	2	T304	225	.50	.125	.125	28
PB-500	5	4-7/8	10	8.5	8	.875	2	T304	225	.50	.125	.125	34
PB-600	6	5.0	11	9.5	8	.875	2	T304	225	.50	.125	.125	43
PB-800	8	5-7/8	13.5	11.75	8	.875	2	T304	225	.50	.125	.125	63
PB-1000	10	6-1/4	16	14.25	12	1	2	T304	225	.50	.125	.125	93
PB-1200	12	6-5/8	19	17	12	1	2	T304	225	.50	.125	.125	120
PB-R-200	2	6	6	4.75	4	.75	2	T304	225	1.0	.125	.125	14
PB-R-250	2-1/2	6	7	5.5	4	.75	2	T304	225	1.0	.125	.125	16
PB-R-300	3	6	7.5	6.0	4	.75	2	T304	225	1.0	.125	.125	20
PB-R-400	4	6	9	7.5	8	.75	2	T304	225	1.0	.125	.125	28
PB-R-500	5	6	10	8.5	8	.875	2	T304	225	1.0	.125	.125	34
PB-R-600	6	6	11	9.5	8	.875	2	T304	225	1.0	.125	.125	43
PB-R-800	8	6	13.5	11.75	8	.875	2	T304	225	1.0	.125	.125	63
PB-R-1000	10	8	16	14.25	12	1	2	T304	225	1.0	.125	.125	93
PB-R-1200	12	8	19	17	12	1	2	T304	225	1.0	.125	.125	120